



Beaufort County Public Works Stormwater Infrastructure Project Summary

Project Summary: Country Manor Phase II

Narrative Description of Project:

Project improved 500 L.F. of drainage system. Grubbed and cleared 500 L.F. of outfall ditch and right of way. Extended (1) driveway pipe. Installed (3) catch basins, 500 L.F. of outfall pipe, rip rap, sod and hydroseeded for erosion control.

Completion: Jul-12

2011-015 / Country Manor Phase II	Labor Hours	Labor Cost	Equipment Cost	Material Cost	Contractor Cost	Overhead Cost	Total Cost
AUDIT / Audit Project	1.5	\$31.34	\$0.00	\$0.00	\$0.00	\$0.00	\$31.34
BKFILL / Back Fill	258.0	\$5,484.10	\$2,041.07	\$776.17	\$0.00	\$0.00	\$8,301.34
CBINS / Catch basin - installed	106.0	\$2,495.66	\$823.10	\$10,119.01	\$0.00	\$0.00	\$13,437.77
ERCON / Erosion control	15.0	\$331.55	\$79.67	\$801.89	\$0.00	\$0.00	\$1,213.11
HAUL / Hauling	267.0	\$5,748.78	\$3,216.23	\$4,372.90	\$0.00	\$0.00	\$13,337.91
HYDR / Hydroseeding	99.0	\$2,102.44	\$323.40	\$1,390.44	\$0.00	\$0.00	\$3,816.28
LM / Loading Materials	58.5	\$1,502.79	\$1,896.58	\$665.25	\$0.00	\$0.00	\$4,064.61
NONPRO / Non-Professional Services	0.0	\$0.00	\$0.00	\$0.00	\$1,553.16	\$0.00	\$1,553.16
ODGRB / Outfall ditch - grubbed	112.5	\$2,520.41	\$929.49	\$551.62	\$0.00	\$0.00	\$4,001.52
OFPI / Outfall Pipe - Installation	126.0	\$2,866.90	\$1,219.04	\$15,464.09	\$0.00	\$0.00	\$19,550.03
STAGING / Staging Materials	30.0	\$591.65	\$190.61	\$53.51	\$0.00	\$0.00	\$835.77
UTLOC / Utility locates	2.0	\$41.78	\$0.00	\$0.00	\$0.00	\$0.00	\$41.78
WSDR / Workshelf - Dressed	27.0	\$584.17	\$189.85	\$53.65	\$0.00	\$0.00	\$827.67
WSGRB / Workshelf - Grubbed	104.0	\$2,390.34	\$1,227.34	\$499.19	\$0.00	\$0.00	\$4,116.87
Indirect Labor, Services and Supplies	0.0	\$0.00	\$0.00	\$0.00	\$0.00	\$18,532.38	\$18,532.38
2011-015 / Country Manor Phase II Sub Total	1,207.5	\$26,717.75	\$12,140.40	\$34,750.89	\$1,553.16	\$18,532.38	\$93,713.30
 Grand Total	 1,207.5	 \$26,717.75	 \$12,140.40	 \$34,750.89	 \$1,553.16	 \$18,532.38	 \$93,713.30

Before



During



After



Project: Country Manor Phase II

Activity: Drainage Improvement

Project #: 2011-015

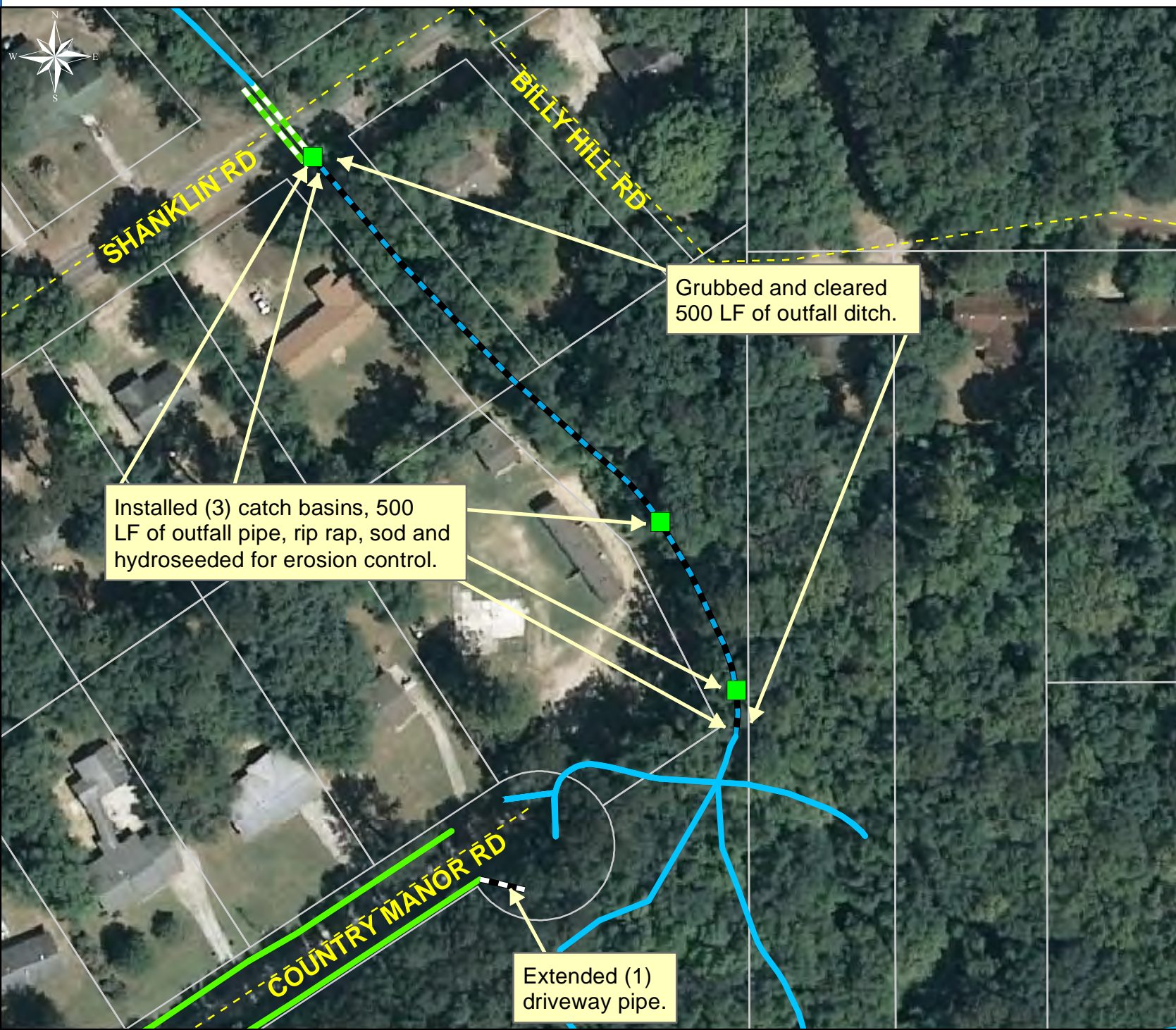
Township: Port Royal Island

Completed: July 2012

Legend

Drainage Type

- River
- Stream
- Outfall
- Lateral
- Lateral Pipe
- Roadside
- Roadside Pipe
- Crossline
- D/W
- Access
- Piped
- Bleeder
- Parcels



0 20 40 80 120 160 Feet

1 inch = 91 feet

Prepared By: BC Stormwater Management Utility
Date Print: 8/9/12
File: C:/sethdata/projects/projectmaps/Country Manor Ph II 2011-015